



Products & Innovations

# Clinical Excellence — Now and into the Future



## Digital and Appliance Innovation

Learn how a full digital workflow can provide better patient outcomes and how appliance innovations can enhance treatment. We will be introducing these exciting new innovations during 2014 (dependent on individual countries).

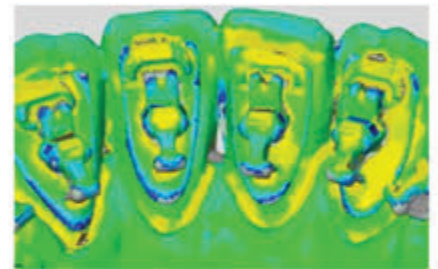
Now Available !

# Precision taken to the next level

## Successful outcomes begin with a precise 'Start'

The basis for a precise start is the NEW Incognito™ Clear Precision Tray for indirect bonding. The Incognito clear precision tray uses the latest digital technology to establish a fully digital workflow throughout the whole production process, from digital malocclusion to bracket design and transfer tray manufacturing.

The Incognito clear precision tray is created directly from digital data, eliminating manual steps, leading to fewer deviations as compared to the current manual positioning process.



Scan and analysis tools were used to determine deviations of brackets from their target positions.

### Combined Overall Deviation - Conventional Bonding



Graph illustrates deviation of bracket positioning with conventionally bonded brackets on a model compared to design data¹.

### Combined Overall Deviation - Incognito™ Clear Precision Tray



Graph illustrates deviation of bracket positioning with Incognito™ Clear Precision Tray brackets on a model compared to design data¹.

## Production Process - Incognito™ Clear Precision Tray

The Incognito™ Brackets are inserted into the Incognito clear precision tray that is manufactured directly from digital data.

**Note:** With the new technology, the custom designed bracket surfaces are not covered by any additional resin base, so 3M™ ESPE™ RelyX™ Unicem 2 Automix Self-Adhesive Resin Cement (filled resin material) is recommended for bonding.



1. The Incognito™ Clear Precision Tray combines a hard outer shell with a soft inlay manufactured directly from digital data



2. Brackets are then inserted into the tray



3. Brackets seated in the tray



4. The highly transparent Incognito™ Clear Precision Tray allows for easy visual control during the bonding process

## Truly Precise and Truly Reliable = True Control

RelyX Unicem 2 automix self-adhesive resin cement is a self-adhesive, dual-cure bonding material recommended for achieving the best results with the Incognito™ Appliance System:

### 3M™ ESPE™ RelyX™ Unicem 2 Automix Self-Adhesive Resin Cement

- Testers experienced a reduced bond failure rate leading to less unplanned visits in your practice and a seamless treatment<sup>2</sup>
- Provides easy handling in a proven automix syringe and is moisture tolerant
- Can be used for both bonding and re-bonding



From April  
2014

# The low profile system just got lower



Continuous development of the Incognito™ Appliance System provides better patient treatment results. The Incognito system's fully customised brackets are already well known for being low profile for patient comfort. Now, our research has developed a technology to make these low profile brackets even lower, and at the same time bringing the slot closer to the tooth axis.

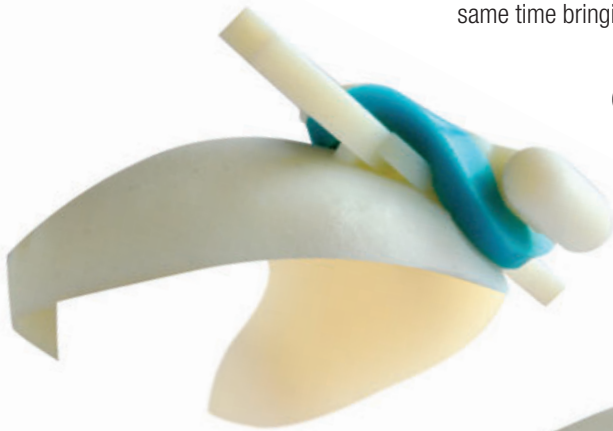


Fig 1. New Incognito appliance posterior bracket profile

Our new design integrates the posterior slot further into the bracket pad for even greater patient comfort, without compromising on ease of ligation.

The bracket slot for the bicuspid and molars is moved an average of 0.3 mm closer to the tooth surface, bringing more freedom to the tongue and improving biomechanics.



Fig 2. Previous Incognito appliance posterior bracket profile

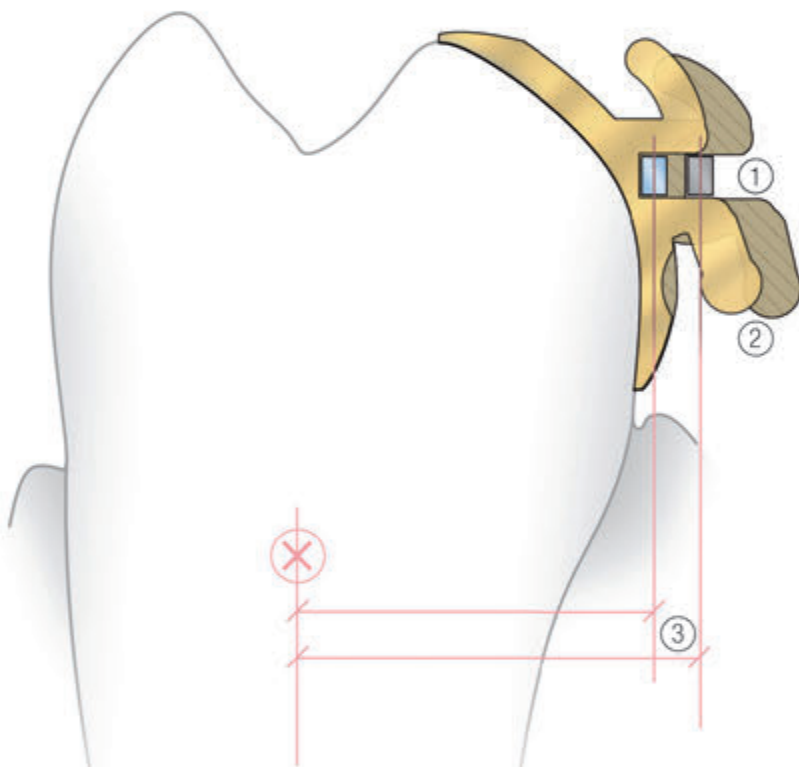


“ A few days ago I got my Incognito braces with the new low profile technology. They felt comfortable after a few days and I didn't have any posterior issues. I'm an extraction case, and my doctor said those cases usually need more time to adapt, but for me it was faster than expected, because the wire is closer to the tooth.”

**Paulo Michelon, (Top-Service customer service representative) Germany, treated in Dr Benito Chiodo's practice in Italy, 2013.**

## Tested improvements for patients and doctors

A nine-month international evaluation indicated doctors are very satisfied with the increased patient comfort and the unchanged handling<sup>3</sup>.



- ① With the new Low Profile Incognito™ System Bracket, the wires move, on average, 60% closer to the tooth<sup>4</sup>, providing more space for the tongue
- ② In most cases, the new Low Profile brackets have become flatter
- ③ Moving the wire closer to the tooth reduces the lever arm, leading to better biomechanics<sup>5</sup>



Archwire (Example)

Low Profile Incognito™ Appliance System Bracket

Incognito™ Appliance System Bracket

“The ordering of the new Posterior Low Profile Brackets has become a fixed element on my Lab Order Forms and for all my cases, I recognised immediately that the brackets are flatter. Also, during the ligation, I determined that it is as quick as the usual brackets and without any compromises. Every innovation which increases patient comfort is an additional argument to provide an Incognito appliance to my patients.”

**Dr Benito Chiodo, (3M Unitek customer and evaluator) Italy, 2013.**



The Incognito™ Appliance System now offers a complete toolbox for the well-known Forsus™ Fatigue Resistant Device. It includes the patented lower arch attachment which is 100% customised. The Incognito system with Forsus device features a special archwire sequence and is available for EZ2 and L-pin Modules. Together they work efficiently to provide effective Class II correction.

**Forsus™ EZ2 Module**

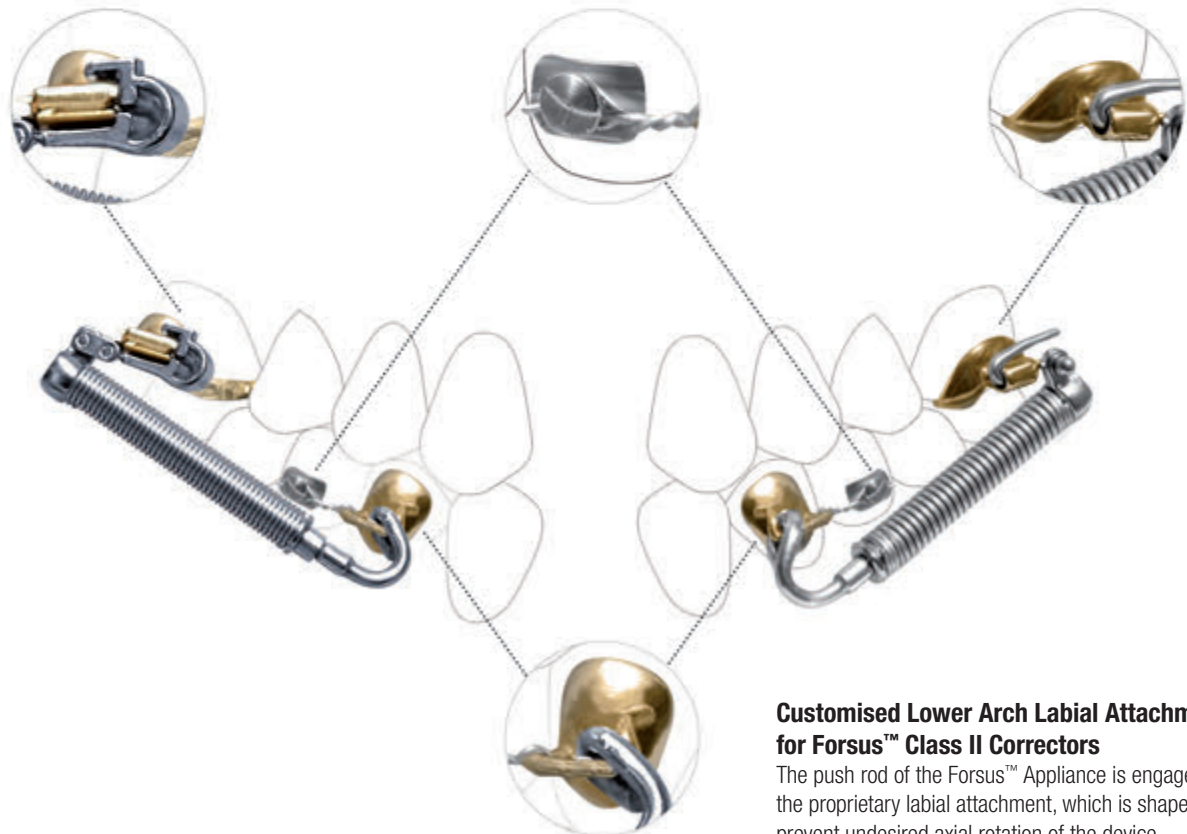
Choose the EZ2 Module for simple, secure installation

**Safety Button**

Provides security for the lower arch attachment

**Forsus™ L-pin Module**

Choose the L-pin Module for flexible installation options



**Customised Lower Arch Labial Attachment for Forsus™ Class II Correctors**

The push rod of the Forsus™ Appliance is engaged in the proprietary labial attachment, which is shaped to prevent undesired axial rotation of the device.



Clinical photography courtesy of Dr Beyza Kircelli, Turkey

## Incognito™ System and Forsus™ Fatigue Resistant Device

- Compliance-free treatment option for Class II patients
- Simple, one-step installation into the headgear tube in one appointment, chairside
- No change of bands / rebonding for lower attachment necessary
- Easy connection to attachment, no screws needed
- Specific Incognito system wire sequence for the Forsus device

## Forsus™ Fatigue Resistant Device

- Comfortable stainless steel mechanism does not bow out into the cheek<sup>6</sup>
- The telescoping, coaxial spring allows for enhanced patient jaw opening<sup>7</sup>
- Open spring design helps to facilitate good oral hygiene<sup>8</sup>
- Independent left and right components allow device to be installed unilaterally if desired
- Low spring stresses give the Forsus device spring a longer, more fatigue-resistant life<sup>9</sup>

Incognito™  
Appliance  
System

meets



Forsus™  
Fatigue  
Resistant Device

# Incognito™ Appliance Support

With certified specialists and patients all having individual requirements, we understand that the journey is best when you are not alone. That's why we are proud to offer a considerable support network for the Incognito™ Appliance Systems, to make it as seamless and rewarding as possible.

## Top-Service Customer Services

Our committed Top-Service customer service team are here to provide information, guidance and advice.

### Contact Top-Service Customer Services:

Telephone: +49 5472 9491 289

Fax: +49 5472 9491 276

email: [ihenrich@mmm.com](mailto:ihenrich@mmm.com)

### Clinical Advice

Telephone: +49 5472 9491 114

Fax: +49 5472 9491 276

email: [gjeworski@mmm.com](mailto:gjeworski@mmm.com)

## Incognito Marketing Team

From website support and advice to ensuring your practice has all the tools to help your patients say 'Yes'. The Incognito Marketing Team has a wide range of resources for you to use.

## Incognito Sales Team

Offering visits to your practice, educational lunch-and-learns and always there at the end of the phone, our team are out there with you whenever you need them. For your local 3M Unitek Representative contact information please call 0845 873 4066.

## Contact Incognito Marketing Team

Telephone: 01509 613077

Fax: 01509 613172

email: [3MUnitekUK@mmm.com](mailto:3MUnitekUK@mmm.com)

## Newly updated Incognito Lab Order Forms

Featuring all the new and available Incognito Appliance innovations you can now download the updated Incognito™ and Incognito™ Lite Appliance Lab Order forms from: [go.3M.com/LOF](http://go.3M.com/LOF)

### References

1. 3M Unitek claims DB "Incognito Clear Precision Tray: Combined overall deviation of brackets positioned with the Clear Precision Tray is better than the deviation achieved with trays manufactured with manual positioning." S10744, 04/2014
2. 3M Unitek Data on File. 'Global Customer Acceptance Evaluation for Application of 3M™ ESPE™ RelyX™ Unicem 2 Automix Self-Adhesive Resin Cement with the Incognito™ Appliance System'. Conducted 2013. Information Available Upon request from Top-Service für Lingualtechnik GmbH.
3. 3M Unitek Data on File. 'Global Customer Acceptance Evaluation for Incognito™ Appliance System Low Profile Posterior Brackets'. Conducted 2013. Information Available Upon request from Top-Service für Lingualtechnik GmbH.
4. 3M Unitek claims DB "Incognito Low Profile Brackets: With the new Low Profile Incognito System Bracket, the wires on average move 60% closer to the tooth." S1072, 04/2014
5. 3M Unitek claims DB "Incognito Low Profile Brackets: Moving the wire closer to the tooth reduces the lever arm, leading to better biomechanics." S10722, 04/2014
6. 3M Unitek claims DB "Forsus Correctors are an aesthetic means of correcting Class II, as the entire device is contained inside the mouth, located in the posterior of the mouth, without making any significant bulges in the cheeks." S10265, 08/2008
7. 3M Unitek claims DB "Forsus Correctors do not prevent patients from opening their mouths as wide as they are able to naturally." S10274, 08/2008
8. 3M Unitek claims DB "Forsus Correctors facilitate good hygiene; the open-coil spring design allows food to be brushed out of the device easily." S10264, 08/2008
9. 3M Unitek claims DB "The plate that holds the clips and the springs of the Forsus™ Correctors EZ2 Modules together has a higher weld strength than the ball pin that held the original clips and springs of the Forsus EZ Module together." S10276, 08/2008
10. Study methodology described in van der Meer WJ. et al (2012). Application of Intra-Oral Dental Scanners in the Digital Workflow of Implantology. PLoS ONE 7(8):e43312. doi: 10.1371/journal.pone.0043312. Additional measurements conducted by ACTA (Academic Center for Dentistry Amsterdam); Wicher J., van der Meer WJ. et al (2012). Publication pending.



## 3M Unitek

### 3M Unitek

3M House

Morley Street

Loughborough

Leicestershire, LE11 1EP

Tel: 0845 873 4066

Fax: 01509 613172

Email: [3MUnitekUK@mmm.com](mailto:3MUnitekUK@mmm.com)

Web: [www.3MUnitek.co.uk](http://www.3MUnitek.co.uk)

CEREC® is a registered trademark of Sirona Dental Systems Inc. © CEREC 2014

iTero™ is a registered trademark of Align Technology Inc. © iTero 2014

Trios is a registered trademark of 3Shape A/S © 3Shape A/S 2014

3M, Unitek, ESPE, Rely X and Forsus are trademarks of the 3M Company.

Incognito is a trademark of Top-Service für Lingualtechnik GmbH. © 3M Unitek 2014.